



The diet of three commercial fishes based on stomach contents in the Yellow Sea

Heeyong Kim¹, Wongyu Park², Jung Hwa Choi^{3,*}

¹ Reserch Planning Division, National Institute of Fisheries Science, Busan 46083, Korea

² Department of Marine Biology, Pukyong National University, Busan 48513, Korea

³ Dokdo Fisheries Research Center, Pohang 37709, Korea

Abstract

Stomach contents of three commercially important species, anchovy (*Engraulis japonica*), small yellow croaker (*Larimichthys polyactis*) and yellow goosfish (*Lophius litulon*) were analyzed to investigate difference of prey between Spring and Fall. Trawl surveys for target fishes were conducted at 12 stations by the RV *Tamgu-8* in the Yellow Sea-Korean side in Spring and Fall 2008 as a part of the United Nations Development Programme/Global Environment Facility (UNDP/GEF), Yellow Sea Large Marine Ecosystem (YSLME) survey. Stomach contents of 50 individuals of each species were analyzed to species level of prey, if the number of specimens was more than 50 for each species. Fullness and digestion condition of stomach contents were determined by five and six levels, respectively. In anchovy stomachs, 23 species in Spring and 15 species in Fall were identified, respectively. Stomach contents were mostly occupied by copepods and euphausiids, mostly *Euphausia* spp., calyptopis in Spring while by copepods and amphipods in Fall. In small yellow croaker stomachs, 23 species in Spring and 11 species in Fall were identified. Stomach contents were mostly occupied by copepods and euphausiids in Spring, but by only euphausiids in Fall. Total 368 yellow goosfish (151 in Spring and 217 in Fall) were captured, but stomach contents only in Fall were analyzed. Most of stomach contents were anchovy with small proportion of Hakodate sand shrimp, Tanaka's snailfish, Pacific cod, and miscellaneous things. The present research unveiled that main food items of plankton feeder were distinctly different by species and seasons in the Yellow Sea-Korean side, as coincided with previous reports.

Keywords: Anchovy, Small yellow croaker, Yellow goosfish, Stomach contents, Yellow Sea, Korea

Introduction

Approximate 450 large fish species with about 50 commercially important fisheries resources occur in the Yellow Sea (Lee, 2004; NFRDI, 2004). Among these commercially important species,

anchovy (*Engraulis japonica*), small yellow croaker (*Larimichthys polyactis*) and yellow goosfish (*Lophius litulon*) were caught as target species for bottom trawls, dragnets and stow nets in Korean fisheries (NFRDI, 2004, 2005). These three species distribute along the coasts of entire Yellow Sea region of Korea,

Received: Feb 3, 2023 Revised: Aug 31, 2023 Accepted: Sep 4, 2023

*Corresponding author: Jung Hwa Choi

Dokdo Fisheries Research Center, Pohang 37709, Korea

Tel: +82-54-724-1000, E-mail: choi2291@korea.kr

This is an Open Access article distributed under the terms of the Creative Commons Attribution Non-Commercial License (<http://creativecommons.org/licenses/by-nc/4.0/>) which permits unrestricted non-commercial use, distribution, and reproduction in any medium, provided the original work is properly cited.

Copyright © 2023 The Korean Society of Fisheries and Aquatic Science

and are consumed widely in Korea (NFRDI, 2004). Fishery harvests of the fish species have been fluctuated over decades in their distribution ranges (Kim et al., 1997; Lluch-Belda et al., 1989; NFRDI, 2004; UNDP/GEF, 2007a), even though they have been managed based on traditional management methods such as the closed season and closed area of fishery (MIFAFF, 2010). In Korea, ecosystem-based stock rebuilding program initiated in 2006 (NFRDI, 2006). Stomach content analysis was proposed as a method to verify trophic conditions for important fishery resources, further better understanding stock conditions of important fishery species (Zhang et al., 2009).

Analysis of stomach contents helps understand their prey composition and preference, further forecast and assess the population variations in the Yellow Sea. Stomach contents of three commercially important species, anchovy, small yellow croaker and yellow goosfish were investigated.

Anchovy is a significant food source for almost every predatory fish and birds within its distribution ranges from egg to adult stage (Hao et al., 2003; Hayasi, 1967). Small yellow croaker is widely distributed over Asia's continental shelf in the East China Sea and the Yellow Sea (NFRDI, 2004; UNDP/GEF, 2007b, 2008), and is one of important preys of yellow goosfish (Cha et al., 1997; Choi et al., 2011). Yellow goosfish is a valuable

ground fish in Korean water (Cha et al., 1997, 1998). The fish is one of the top level predators in Korean marine ecosystem with a big mouth, mostly feeding small yellow croaker and large anchovy (Cha et al., 1997, 1998).

This study focuses on documents the details of stomach contents of target species and helps fisheries researchers understand prey selectivity and composition of the target fish species.

Materials and Methods

Trawl surveys for the target fishes were conducted by the RV *Tamgu-8* of the West Sea Fisheries Research Institute (WSFRI) in the Yellow Sea, Korean side Spring (May 15–21) and Fall (September 23–30) 2008 as the regional stock assessment of the United Nations Development Programme/Global Environment Facility (UNDP/GEF) Yellow Sea Large Marine Ecosystem (YSLME) survey to determine the condition of stocks and manage fisheries into the future (UNDP/GEF, 2007a). Fish were trawled at 12 stations and the hauling period was 60 minutes at each station (Fig. 1). Fish samples collected with a bottom trawl net (20 mm mesh) were classified by taxa and the body length and body weight of them were measured on

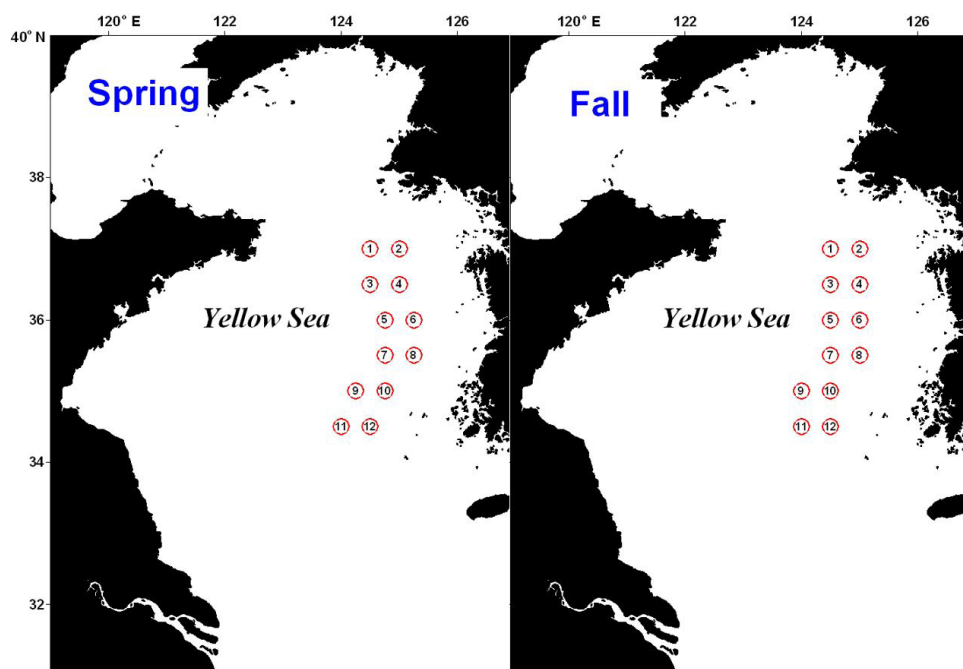


Fig. 1. Sampling stations for trawl survey in the Yellow Sea-Korean side in Spring and Fall 2008.

board. After measured lengths and weights, fish stomachs were removed and preserved in 10% formalin. Fish stomach contents of 50 individuals each species were analyzed to species level, if possible. Stomach weights (including stomach and its contents; net stomach weight excluding the contents) were weighed, and stomach fullness and digestion condition were determined by the international scale, for stomach fullness (0–4), where 0 was empty and 4 was 100% full, for stomach fullness and digestion condition (0–5), where 0 was no digestion and 5 was empty stomach, were determined.

Results

Anchovy

Total 231 anchovy (98 in Spring and 133 in Fall) were measured (Fig. 2). Total lengths of anchovy ranged from 60 mm to 160 mm in Spring and Fall 2008 (Fig. 2). In Spring, most anchovy size ranged within 80–120 mm while in Fall that ranged from 80 mm to 160 mm. One half of the stomachs were 25% and 50% full and the other half of stomachs were more than 50% full in Spring (Fig. 3). In Fall, most stomachs were close to empty and 14% of stomachs were 50% full. In Spring approximately one half of the stomachs had less than digestion rate of 50% and the other half of stomachs had more than digestion rate of 50% (Fig. 4). However, in Fall more than 70% of stomach contents were almost fully digested. Stomach contents consisted of 7 taxa of mysids, decapods, chaetognaths, amphipods, euphausiids, copepods and unidentified crustaceans (Fig. 5). In Spring, stomach contents

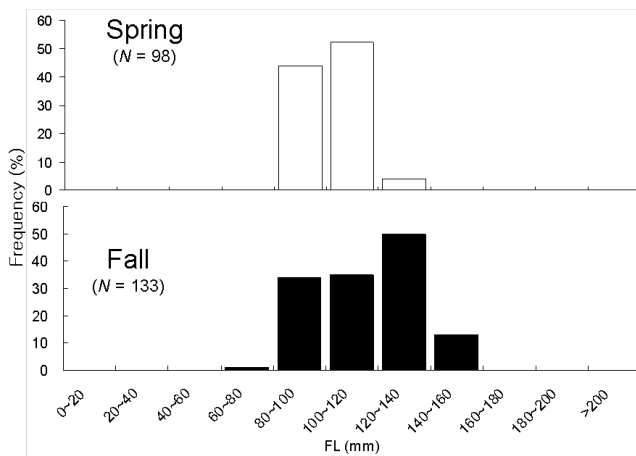


Fig. 2. Size frequency of anchovy in the Yellow Sea-Korean side in Spring and Fall 2008.

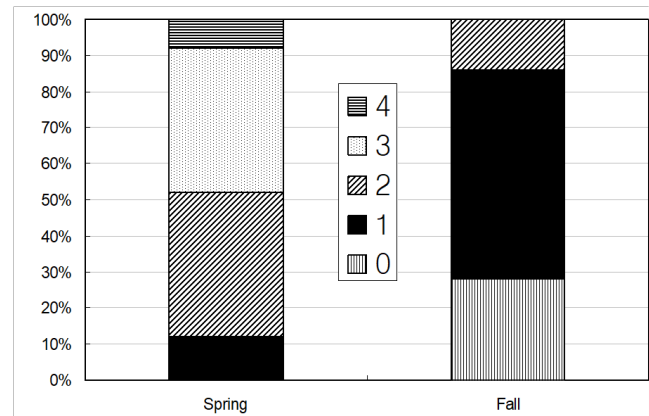


Fig. 3. Stomach fullness of anchovy in the Yellow Sea-Korean side in Spring and Fall 2008. 0, 1, 2, 3 and 4 indicate empty, 25% full, 50% full, 75% full and 100% full, respectively.

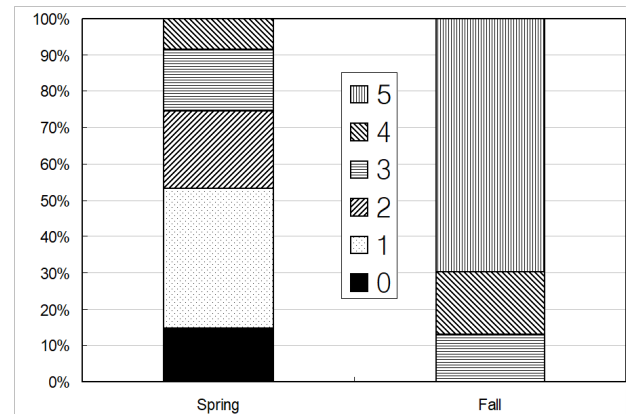


Fig. 4. Digestion rate of anchovy in the Yellow Sea-Korean side in Spring and Fall 2008. 0, 1, 2, 3, 4 and 5 indicate 0% digested, 25% digested, 50% digested, 75% digested, 100% digested and empty stomach, respectively.

were mostly occupied by copepods and euphausiids. In Fall, more than 80% of stomach contents were copepods. In Spring, proportion of copepods in the stomach contents decreased with increasing body lengths while that of euphausiids and amphipods increased with increasing body sizes (Fig. 6). In Fall, proportion of copepods in the stomach contents decreased as anchovy body size increased. Proportion of amphipods increased up to 120 mm of anchovy body size after then it decreased (Fig. 6).

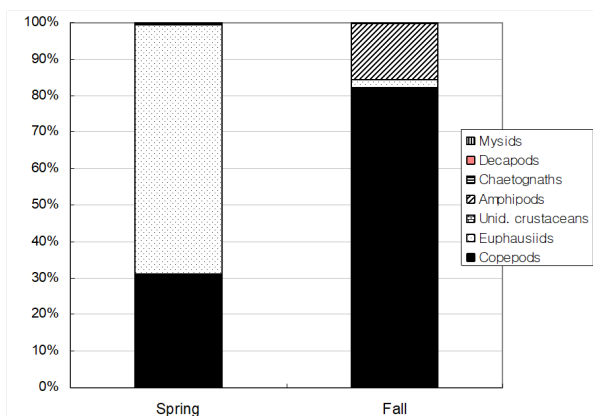


Fig. 5. Stomach content composition by taxa of anchovy in the Yellow Sea-Korean side in Spring and Fall 2008.

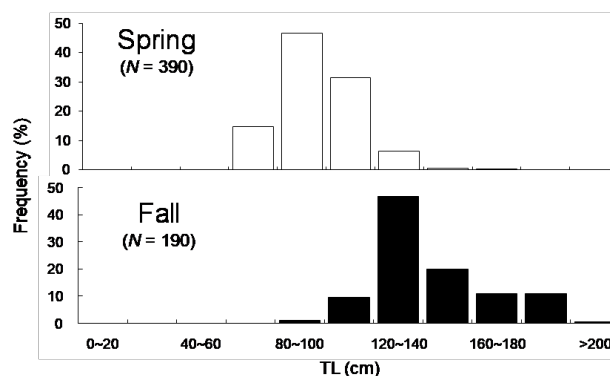


Fig. 7. Size composition of yellow croaker in the Yellow Sea-Korean side in Spring and Fall 2008.

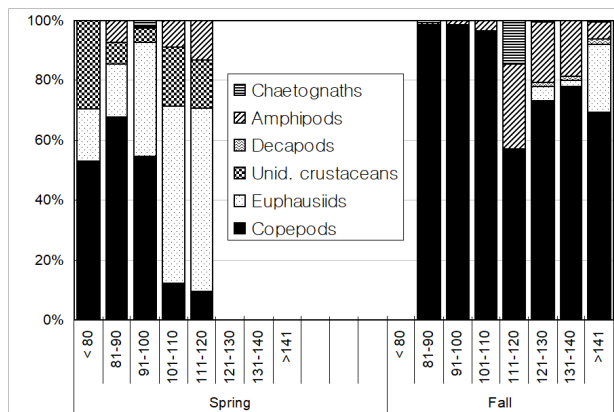


Fig. 6. Stomach content composition by body size of anchovy in the Yellow Sea-Korean side in Spring and Fall 2008.

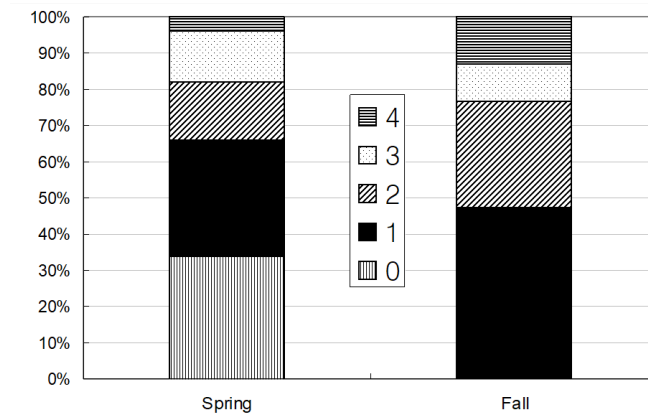


Fig. 8. Stomach fullness of yellow croaker in the Yellow Sea-Korean side in Spring and Fall 2008. 0, 1, 2, 3 and 4 indicate empty, 25% full, 50% full, 75% full and 100% full, respectively.

Small yellow croaker

Total 580 yellow croakers (390 in Spring and 190 in Fall) were measured (Fig. 7). In Spring, the size of yellow croaker dropped in 60–140 mm while in Fall that dropped in 100–200 mm. Overall, sizes of yellow croaker shifted from smaller to larger with changing seasons. In Spring, 66 % of the stomachs were less than 25% full and 34% of stomachs were more than 50% full (Fig. 8). In Fall, 48% of stomachs were 25% full and the rest of stomachs were more than 50% full. In Spring, 73% of the stomachs had less than the digestion rate of 50% and 27% of stomachs had more than digestion rate of 50% (Fig. 9). However, in Fall more than 67% of stomach contents were almost fully digested.

Stomach contents consisted of 8 taxa of molluscs, mysids, decapods, chaetognaths, amphipods, euphausiids, copepods and unidentified crustaceans (Fig. 10). In Spring, stomach contents were mostly occupied by copepods and euphausiids. In Fall, more than 73% of stomach contents were composed of euphausiids. In Spring, proportion of copepods in the stomach contents decreased with increasing body lengths while that of euphausiids and amphipods increased with increasing body sizes (Fig. 11). In Fall, no specific pattern was discovered. However, proportion of euphausiids in the stomachs was more than 50% at almost all size categories except 151–160 and 171–180 mm categories. Particularly different pattern in the anchovy stomach contents

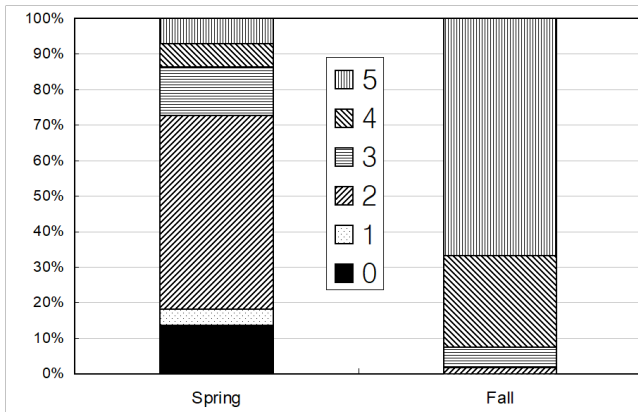


Fig. 9. Digestion rate of yellow croaker in the Yellow Sea-Korean side in Spring and Fall 2008. 0, 1, 2, 3, 4 and 5 indicate 0% digested, 25% digested, 50% digested, 75% digested, 100% digested and empty stomach, respectively.

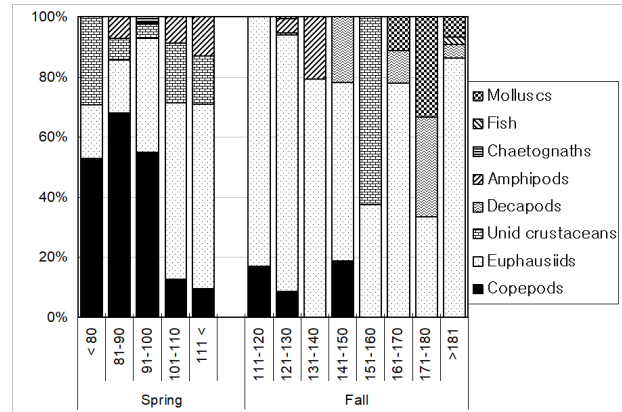


Fig. 11. Stomach content composition by body size of yellow croaker in the Yellow Sea-Korean side in Spring and Fall 2008.

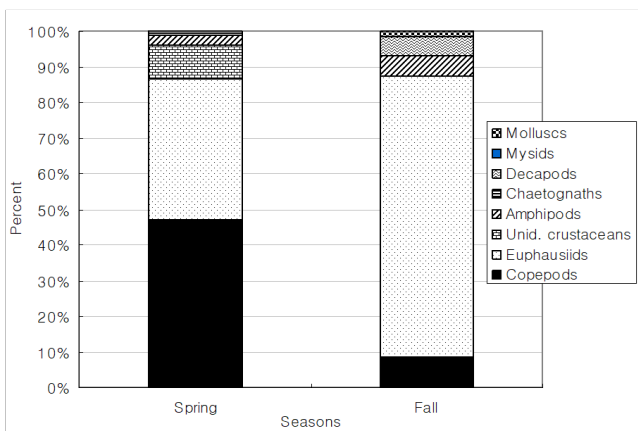


Fig. 10. Stomach content composition by taxa of yellow croaker in the Yellow Sea-Korean side in Spring and Fall 2008.

in Fall were higher proportion of decapods and molluscs in the larger anchovy compare to those in Spring (Fig. 11).

Yellow goosefish

Total 368 yellow goosefish (151 in Spring and 217 in Fall) were measured (Fig. 12). In Spring, the fish size showed a bell shape with a peak in category 250 through 300 mm, and 70% of yellow goosefish fell down in 250–350 mm. In Fall, the body size ranged from 150 to 650 mm and showed two modes in 200–250 mm and 350–400 mm with 27% and 26%, respectively. In Spring, 68 % of the stomachs were more than 75% full and 32% of stomachs

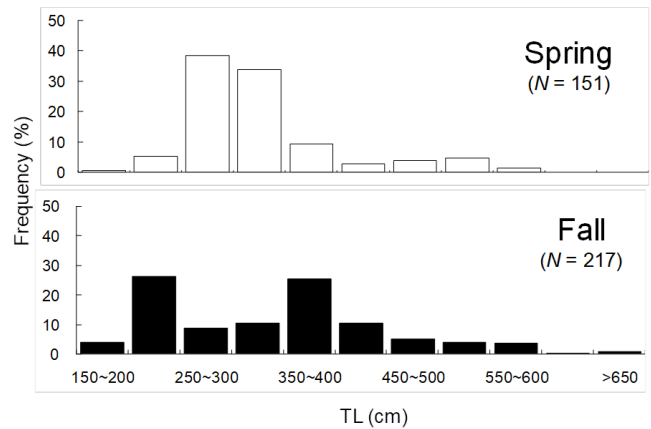


Fig. 12. Size frequency of yellow goosefish in the Yellow Sea-Korean side in Spring and Fall 2008.

were less than 50% full (Fig. 13). In Fall, 67% of stomachs were less than 50% full and the rest of stomachs were more than 50% full. Stomach contents only in Fall were analyzed (Fig. 14). 83% of stomach contents were anchovy. The rest proportion consisted of Hakodate sand shrimp (*Crangon hakodatei*, 10%), Tanaka’s snailfish (*Liparis tanakai*, 4%), Pacific cod (*Gadus macrocephalus*, 1%), other fish (2%) and miscellaneous things (4%). Stomach content composition varied with its size (Fig. 15). In yellow goosefish smaller than 300 mm, proportion of Hakodate sand shrimp was higher than 20%, but after that body size the proportion of the prey decreased, but the proportion of anchovy was higher.

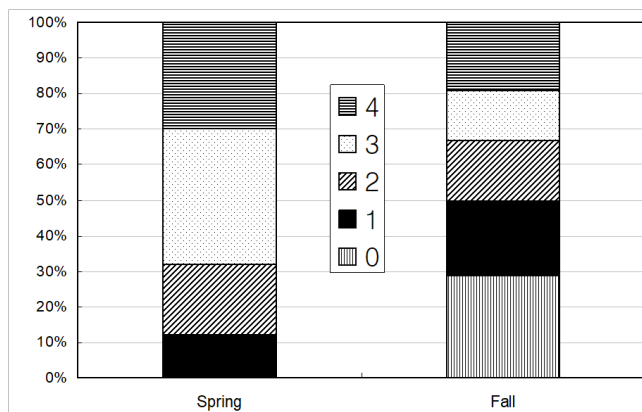


Fig. 13. Stomach fullness of yellow goosfish in the Yellow Sea-Korean side in Spring and Fall 2008. 0, 1, 2, 3 and 4 indicate empty, 25% full, 50% full, 75% full and 100% full, respectively.

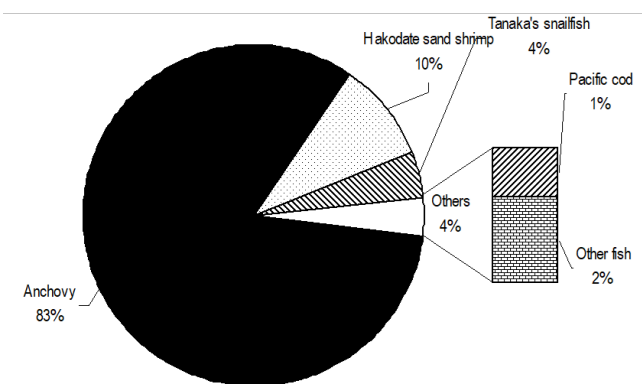


Fig. 14. Stomach composition by taxa of yellow goosfish in the Yellow Sea-Korean side in Fall 2008.

Discussion

Anchovy is an opportunistic feeder according to their availability (Espinoza & Bertrand, 2008). This flexible feeding behavior was confirmed by the high variability of stomach fullness by the time of the day, latitude, distance to the coast, digestion rate, or sea surface temperature (Espinoza & Bertrand, 2008).

A single species of fish prefers different prey species. Regional differences of preys can vary prey selection of the fish species. Anchovy feed on both phytoplankton and zooplankton according to the size of fish (Alamo, 1989; Pauly et al., 1989). Considering only prey numbers, anchoveta diets are dominated

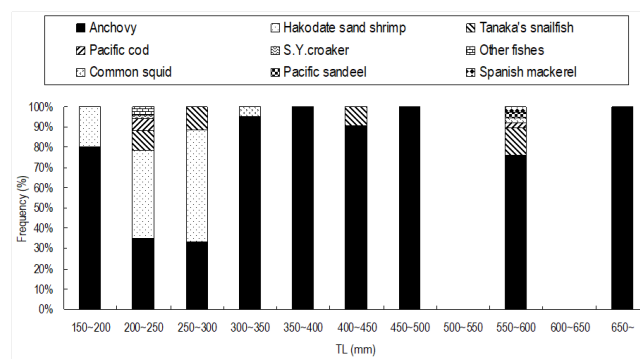


Fig. 15. Stomach contents composition by body size of yellow goosfish in the Yellow Sea-Korean side in Fall 2008.

by phytoplankton, which comprise 99.5% of all prey with small zooplankton fraction (Espinoza & Bertrand, 2008). However, zooplankton becomes the most important component and contributes 98% of dietary carbon, with a strong dominance of euphausiids, followed by copepods (Espinoza & Bertrand, 2008). The method used in the study based on counts of preys under microscope may not be inadequate for estimating phytoplankton, but appropriate for estimating zooplankton. However, considering stomach contents counted under microscope, major portion of stomach contents were zooplankton such as larval forms of euphausiids, and adult and immature stages of copepods. Copepod genera accounting for major portion of stomach contents in the study were *Corycaeus*, *Calanus* and *Centropages* which was coincided with previous studies for anchovy in Peruvian waters (Alamo, 1989; Pauly et al., 1989; Espinoza & Bertrand, 2008). Also, many other zooplankton species were found from the anchovy stomach, as indicated from various reports (Alamo, 1989; Pauly et al., 1989; Espinoza & Bertrand, 2008) and the study.

Ontogenetic differences of the composition of stomach contents, particularly increasing the proportion of copepods in Spring cannot be easily explainable. Because of high digestion rate of stomach contents, observed results may not represent the real pattern of feeding or prey preference. Thus, further investigations to understand prey selection or preference are required.

Seasonal difference of stomach contents may reflect the seasonal variation of prey composition in the study area during the survey. Seasonal variation of species composition of zooplankton was reported at various areas (Lee, 1998; Razouls et al., 1998; Yoshida et al., 2006). Seasonal variation of species

composition and abundance of zooplankton are resulted from the seasonal cycles of zooplankton and phytoplankton production driven by nutrient supply and climate changes (Nicolajsen et al., 1983; Brodeur & Ware, 1992; Kiørboe & Nielsen, 1994). Different foraging behaviors of fish influence zooplankton communities and prefer preferable prey species (Chang et al., 2004). Preferred prey may have been fed by anchovy in the survey. Thus, differences by sampling seasons in prey composition in the stomach may reflect the seasonal changes of zooplankton communities in the study area.

Euphausia pacifica distribute around the Korean Peninsula (Hong, 1970) and larvae of the species are collected mainly in Spring (Suh et al., 1991, 1993). Euphausiid larvae are produced in the Yellow Sea in Spring, probably by stimulating by Spring phytoplankton bloom (Lasker, 1966). Small euphausiid larvae reside near surface during day so that anchovy dwelling near surface had a chance to feed them (Mauchline & Fisher, 1969). Thus, stomach of anchovy in Spring was occupied by copepods and euphausiids. However, in Fall, euphausiid larvae grow, they migrate vertically (Mauchline & Fisher, 1969), which descends deep water during the day and ascends near surface. As anchovy stay near surface during the day, anchovy did not have a chance to come across euphausiids in Fall. Considering the results, it is likely that anchovy prefer smaller size zooplankton and favor copepods instead of euphausiids and amphipods.

Small yellow croaker feed on zooplankton, mostly crustacean zooplankton (Xue et al., 2005; Zhang et al., 2008). Decapods were more important preys in summer, whereas euphausiids were more important during other seasons (Xue et al., 2005). The study result was coincided with Xue et al. (2005) and Zhang et al. (2008) in that crustaceans were the most dominant stomach contents in small yellow croaker. However, considering high digestion rates because small yellow croaker is a crepuscular, or nocturnal feeder (Xue et al., 2005) and fish were collected during the day, crustaceans can be remained in the stomachs because they have strong crustacean shells, unlikely other zooplankton group. We found several pieces or uncountable piece of chunk in the stomach with eyes of euphausiids or much digested copepods. These differences in digestion rate according to the species may bias results. However, ontogenetic differences were found in the diet composition with difference size categories. Their growing size may result in different habit, or function of small yellow croaker, as indicated in Zhang et al. (2007). Feeding activity was highest in autumn and lowest in Spring and winter (Xue et al., 2005). However, it may not be related with stomach

fullness of the study because feeding behavior and stomach fullness is of a diel pattern, but not of seasonal pattern.

In stomach contents of small yellow croaker, copepods and euphausiids were mainly items in Spring while euphausiids in Fall. These results were coincided with previous reports conducted in the Yellow Sea (Xue et al., 2005; Zhang et al., 2008). Unlikely stomach contents of anchovy, stomachs of small yellow croaker were full of euphausiids in Fall.

Yellow goosefish is a piscivore (Cha et al., 1997) when it is an adult, but a planktivore when it is a larval fish (Baeck & Huh, 2003). When they are adults, approximately up to 98.8% of stomach contents are fish, such as *Pseudosciaena manchurica*, *Collichthys niveatus*, *Evynnis japonica* and *Trichiurus lepturus* (Cha et al., 1997) with a small proportion of crustaceans and cephalopods. Cha et al. (1997) reported that major proportion of stomach contents were *T. lepturus*, but in the study, the major contents of the stomach were *E. japonica*. According to Cha et al. (1997), *P. manchurica* was a dominant prey of all goosefish sizes, which is different from the current study where *E. japonica* was the dominant species regardless of goosefish size but with relatively larger proportion of crustaceans ingested by smaller goosefish. However, the differences between the studies may result from differences in sampling areas. Cha et al. (1997) fished yellow goosefish in the southern area of Jeju island, approximate 200 km south of the present study area.

Considering diel feeding behavior of fish, stomach fullness is not a good indicator of the biological reality at any one moment. Stomach fullness was different by species, sampling season, and individual, indicating that stomach fullness may not be a meaningful ecological index. If fish were collected at the same time and the same place, then stomach fullness may help determining the feeding time of the day, feeding habits and digestion rates and durations of the fish species. However, specimens analyzed in the study were captured at multiple times and places.

Competing interests

No potential conflict of interest relevant to this article was reported.

Funding sources

This study was supported by the scientists of the National Institute of Fisheries Science (R2023005), using their research data and was also conducted under contract to the United Nations Development Programme/Global Environment Facility

(UNDP/GEF) Yellow Sea project “Reducing environmental stress in the Yellow Sea Large Marine Ecosystem (YSLME)”

Acknowledgements

Not applicable.

Availability of data and materials

Upon reasonable request, the datasets of this study can be available from the corresponding author.

Ethics approval and consent to participate

We ensured that the experiments following the ethical guidelines of National Institute of Fisheries Science.

ORCID

Heeyong Kim <https://orcid.org/0000-0001-7492-8264>
 Wongyu Park <https://orcid.org/0000-0002-5486-3667>
 Jung Hwa Choi <https://orcid.org/0000-0003-3392-0818>

References

- Alamo A. Stomach contents of anchoveta (*Engraulis ringens*), 1974-1982. In: Proceedings of the Workshop on Models for Yield Prediction in the Peruvian Ecosystem; 1987; Callao, Peru.
- Baeck GW, Huh SH. Feeding habits of juvenile *Lophius litulon* in the coastal waters of Kori, Korea. *J Korean Fish Soc.* 2003;36:695-9.
- Brodeur RD, Ware DW. Long-term variability in zooplankton biomass in the subarctic Pacific Ocean. *Fish Oceanogr.* 1992;1:32-8.
- Cha BY, Hong BQ, Jo HS, Sohn HS, Park YC, Yang WS, et al. Food habits of the yellow goosfish, *Lophius litulon*. *J Korean Fish Soc.* 1997;30:95-104.
- Cha BY, Park YC, Huh SH. Age and growth of the yellow goosfish, *Lophius litulon*. *J Korean Fish Soc.* 1998;31:529-34.
- Chang KH, Kim HW, La GH, Jeong KS, Joo GJ. Prey preference of juvenile fish based on the laboratory experiments and its Impact on zooplankton community of the Nakdong River. *Korean J Ecol Environ.* 2004;37:130-6.
- Choi JH, Sung BJ, Lee DW, Kim JB, Oh TY, Kim JN. Feeding habits of yellow goos fish *Lophius litulon* and john dory *Zeus faber* in the south sea of Korea. *Fish Aquat Sci.* 2011;14:435-41.
- Espinoza P, Bertrand A. Revisiting Peruvian anchovy (*Engraulis ringens*) trophodynamics provides a new vision of the Humboldt Current system. *Prog Oceanogr.* 2008;79:215-27.
- Hao W, Jian S, Ruijing W, Lei W, Yi'an L. Tidal front and the convergence of anchovy (*Engraulis japonicus*) eggs in the Yellow Sea. *Fish Oceanogr.* 2003;12:434-42.
- Hayasi S. A note on the biology and fishery of the Japanese anchovy, *Engraulis japonica* (Houttuyn). *Calif Coop Ocean Fish Investig Rep.* 1967;11:44-57.
- Hong SY. The euphausiid crustacean of Korean waters. In: The Kuroshio: a symposium on the Japan current). Honolulu, HI: East-West Center Press; 1970
- Kim S, Jung S, Zhang CI. The effect of seasonal anomalies of seawater temperature and salinity on the fluctuation in yields of small yellow croaker, *Pseudosciaena polyactis*, in the Yellow Sea. *Fish Oceanogr.* 1997;6:1-9.
- Kjørboe T, Nielsen TG. Regulation of zooplankton biomass and production in a temperate, coastal ecosystem. 1. Copepods. *Limnol Oceanogr.* 1994;39:493-507.
- Lasker R. Feeding, growth, respiration, and carbon utilization of a euphausiid crustacean. *J Fish Board Canada.* 1966;23:1291-317.
- Lee C, Ce C, Mun C. Seasonal variation in abundance, species occurrence and species diversity of zooplankton in Asan bay, the Yellow Sea over the last eight years. *Yellow Sea.* 1998;4:40-8.
- Lee CY. Review of the fish-fauna of the west sea of Korea. *Korean J Ichthyol.* 2004;16:60-74.
- Lluch-Belda D, Crawford RJM, Kawasaki T, MacCall AD, Parrish RH, Schwartzlose RA, et al. World-wide fluctuations of sardine and anchovy stocks: the regime problem. *South Afr J Mar Sci.* 1989;8:195-205.
- Mauchline J, Fisher LR. The biology of euphausiids. *Adv Mar Biol.* 1969;7:5.
- Ministry for Food, Agriculture, Forestry and Fisheries [MIF-AFF]. Fisheries Resources Management Act [Internet]. MIFAFF. 2010 [cited 2023 Aug 31]. https://elaw.klri.re.kr/eng_mobile/viewer.do?hseq=61021&type=part&key=27
- National Fisheries Research and Development Institute [NFR-DI]. Commercial fishes of the coastal and offshore waters in Korea (Second Edition). Busan: Yeomun-Sa; 2004.
- National Fisheries Research and Development Institute [NFR-DI]. Biological characters and fishing grounds of commercially important species in Korea waters. Busan: Yeomun-Sa; 2005.

- National Fisheries Research and Development Institute [NFR-DI]. Biological information database on the target species for stock recovery in Korea. Busan: Hangeul-Graphic-Sa; 2006.
- Nicolajsen H, Møhlenberg F, Kiørboe T. Algal grazing by the planktonic copepods *Centropages hamatus* and *Pseudocalanus* sp.: diurnal and seasonal variation during the spring phytoplankton bloom in the Øresund. *Ophelia*. 1983;22:15-31.
- Pauly D, Jarre A, Luna S, Sambilay V Jr., Rojas de Mendiola B, Alamo A. On the quantity and types of food ingested by Peruvian anchoveta, 1953-1982. In: Proceedings of the Workshop on Models for Yield Prediction in the Peruvian Ecosystem; 1987; Callao, Peru.
- Razouls S, Du Rsnec G, Guillot P, Maison J, Jeandel C. Seasonal abundance of copepod assemblages and grazing pressure in the Kerguelen Island area (Southern Ocean). *J Plankton Res*. 1998;20:1599-614.
- Suh HL, Soh HY, Hong SY. Larval development of the euphausiid *Euphausia pacifica* in the Yellow Sea. *Mar Biol*. 1993;115:625-33.
- Suh HL, Toda T, Terazaki M. Diet of calyptopes of the euphausiid *Euphausia pacifica* in the Yellow Sea. *Mar Biol*. 1991;111:45-8.
- United Nations Development Programme/Global Environment Facility [UNDP/GEF]. Regional working group: fisheries. UNDP/GEF project entitled “Reducing Environmental Stress in the Yellow Sea Large Marine Ecosystem”. Ansan: UNDP/GEF Yellow Sea Project Management Office; 2007a. Report No.: UNDP/GEF/YS/RWG-F.5/3.
- United Nations Development Programme/Global Environment Facility [UNDP/GEF]. The Yellow Sea: analysis of environmental status and trends. Volume 3: regional synthesis reports. UNDP/GEF project: reducing environmental stress in the Yellow Sea large marine ecosystem, Ansan, Republic of Korea. Ansan: UNDP/GEF Yellow Sea Project Management Office; 2007b.
- United Nations Development Programme/Global Environment Facility [UNDP/GEF]. The Yellow Sea: analysis of environmental status and trends. Volume 4: governance analysis reports. UNDP/GEF project: reducing environmental stress in the Yellow Sea large marine ecosystem, Ansan, Republic of Korea. Ansan: UNDP/GEF Yellow Sea Project Management Office; 2008.
- Xue Y, Jin X, Zhang B, Liang Z. Seasonal, diel and ontogenetic variation in feeding patterns of small yellow croaker in the central Yellow Sea. *J Fish Biol*. 2005;67:33-50.
- Yoshida T, Toda T, Yusoff FM, Othman BHR. Seasonal variation of zooplankton community in the coastal waters of the Straits of Malacca. *Coast Mar Sci*. 2006;30:320-7.
- Zhang B, Jin XS, Dai FQ. Feeding habits of the two sciaenid fishes near the Changjiang estuary. *Acta Zool Sin*. 2008;54:209-17.
- Zhang B, Tang Q, Jin X. Decadal-scale variations of trophic levels at high trophic levels in the Yellow Sea and the Bohai Sea ecosystem. *J Mar Syst*. 2007;67:304-11.
- Zhang CI, Kim S, Gunderson D, Marasco R, Lee JB, Park HW, et al. An ecosystem-based fisheries assessment approach for Korean fisheries. *Fish Res*. 2009;100:26-41.